

**Total Units by Month**

	2002	2003	2004	2005	2006	2007	2008	2009	% Change from Previous Year
January	173	520	301	305	244	195	118	70	-40.7%
February	240	248	454	354	277	177	158	78	-50.6%
March	435	425	515	430	332	198	171	151	-11.7%
April	454	436	629	385	331	200	267	349	30.7%
May	453	404	425	505	405	191	144	136	-5.6%
June	401	422	464	497	248	268	265	222	-16.2%
July	293	540	472	479	273	211	145	189	30.3%
August	523	421	479	358	291	293	125	118	-5.6%
September	449	396	480	322	205	218	133	138	3.8%
October	306	547	285	420	222	200	106	156	47.2%
November	569	276	290	312	195	186	81		
December	348	348	304	289	165	147	66		

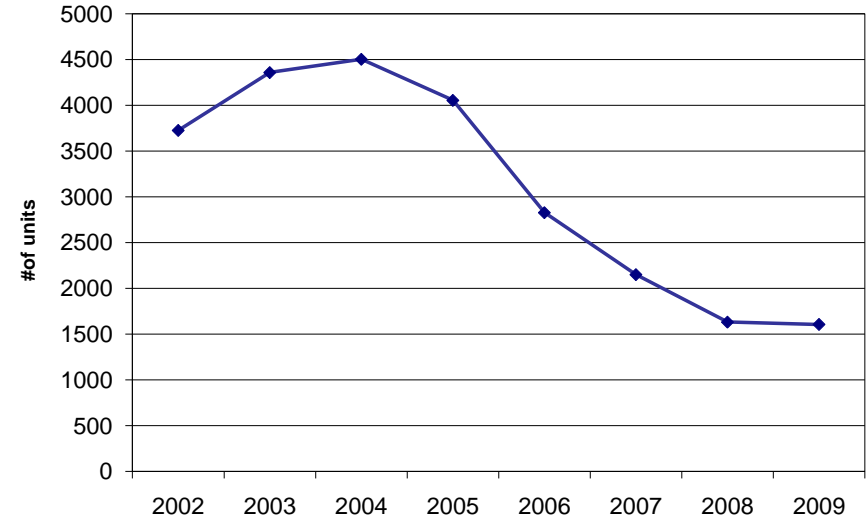
**Total Units Year to Date**

	2002	2003	2004	2005	2006	2007	2008	2009	% Change
Jan. - Oct.	3,727	4,359	4,504	4,055	2,828	2,151	1,632	1,607	-1.5%

**Total Units by Year**

	2002	2003	2004	2005	2006	2007	2008	2009	% Change From Previous Year
Single Family	3,990	4,250	4,276	4,005	2,789	2,159	1,377	1,268	
Apartments	639	636	670	534	377	283	236	294	
Condos	15	97	152	117	22	42	166	45	
<b>TOTAL</b>	<b>4,644</b>	<b>4,983</b>	<b>5,098</b>	<b>4,656</b>	<b>3,188</b>	<b>2,484</b>	<b>1,779</b>	<b>1,607</b>	
% Change From Previous Year		6.8%	2.3%	-8.7%	-31.5%	-22.1%	-28.4%		

**Total Units - Year To Date**



**Month vs Month**

