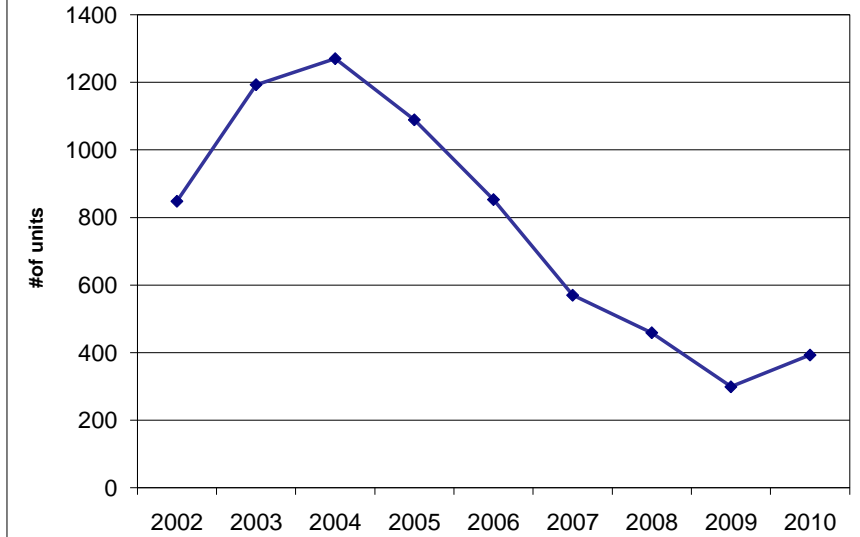


Total Units by Month

	2002	2003	2004	2005	2006	2007	2008	2009	2010	% Change from Previous Year
January	173	520	301	305	244	195	122	70	100	42.9%
February	240	248	454	354	277	177	166	78	108	38.5%
March	435	425	515	430	332	198	171	151	185	22.5%
April	454	436	629	385	331	200	267	348	0	
May	453	404	425	505	405	191	144	135	0	
June	401	422	464	497	248	268	265	222	0	
July	293	540	472	479	273	211	145	189	0	
August	523	421	479	358	291	293	121	121	0	
September	449	396	480	322	205	218	164	138	0	
October	306	547	285	420	222	200	106	156	0	
November	569	276	290	312	195	186	76	100	0	
December	348	348	304	289	165	147	72	100	0	

Total Units - Year To Date



Total Units Year to Date

	2002	2003	2004	2005	2006	2007	2008	2009	2010	% Change
Jan-Mar	848	1,193	1,270	1,089	853	570	459	299	393	31.4%

Total Units by Year

	2002	2003	2004	2005	2006	2007	2008	2009	2010
Single Family	3,990	4,250	4,276	4,005	2,789	2,159	1,409	1,461	359
Apartments	639	636	670	534	377	283	267	298	14
Condos	15	97	152	117	22	42	143	49	20
TOTAL	4,644	4,983	5,098	4,656	3,188	2,484	1,819	1,808	393

% Change From Previous Year 6.8% 2.3% -8.7% -31.5% -22.1% -26.8% -0.6%

Month vs Month

